



DSH Foam Dock Seal with Head Curtain

Product Specifications



DESIGN HIGHLIGHTS

- Top of hood is tapered forward and securely fastened to the building wall
- Tapered top is supported with thick wall aluminum pipe
- Fiberglass stays add stiffness to hood top to prevent sagging
- Hood curtain splits offer load relief and higher clearance
- Roll-formed galvanized steel framing reduces pressure on building wall, warranted for 5 years
- Endurance tested foam core is continuously bonded to frame surface with flexible, non-flammable adhesive
- A wide selection of durable coated fabrics provide maximum durability
- Highly resilient, open-celled polyurethane foam keeps original shape and compresses easily to extend seal life
- Side pad bottoms are tapered to avoid pinching and wear
- All pads are vented for air and moisture release
- Full length yellow stripes guide drivers to the dock
- Heavy-duty, galvanized steel mounting brackets included

APPLICATION DATA

Door width: _____ ft. _____ in.
 Door height: _____ ft. _____ in.
 Dock height: _____ ft. _____ in.

Bumper protection*: _____ in.

(*Includes bumper projection and any building wall/foundation offset or cantilever)

TRUCKS AND TRAILERS SERVICED

Width: _____ Max. _____ Min.

Height: _____ Max. _____ Min.

Length: _____ Max. _____ Min.

Hydraulic tailgate: Yes No

Rear step section: Yes No

Tailgate/step section size: _____ in

Yard jockeys: Yes No

PROJECT INFORMATION

JOB NAME _____

ADDRESS _____

GENERAL CONTRACTOR _____

DISTRIBUTOR _____

QUANTITY _____

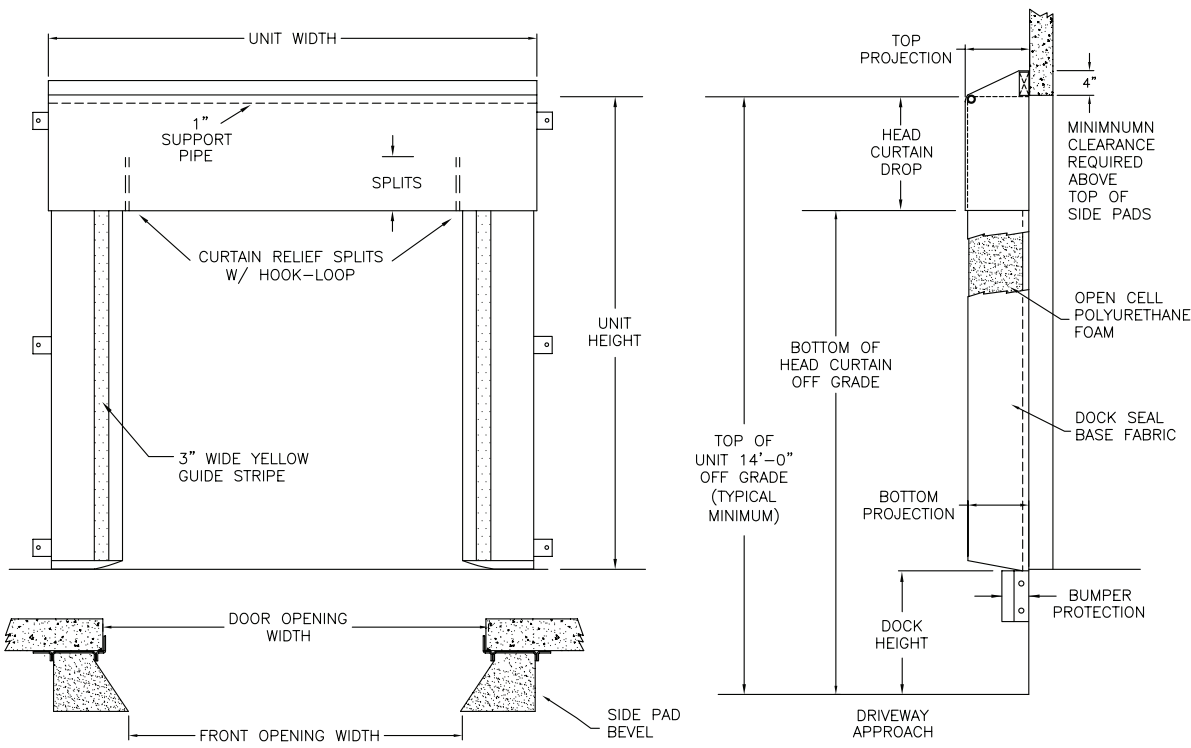
CERTIFIED FOR CONSTRUCTION

BY _____

COMPANY _____

ADDRESS _____

DATE _____



Quantity _____ Model: DSH

Head Curtain Width: (Distance to outside of side pads) _____ (Total inches)

Head Curtain Drop: 18" 24" 30" 36" 42" 48" _____

Head Curtain Splits: 6" 12" 18" 24" 30" 36" No split

Head Curtain Options: None Pull-rope assy 2" foam front Sectional foam front

Side Pad Height: _____ (Total inches)

Side Pad Back/Face: 6/10 8/12 10/12 12/12 12/15 8/15 6/14 10/18 8/23

Base Material: 22 oz. vinyl 40 oz. vinyl 16 oz. CSM 40 oz. CSM TS-55®

Color: Black Tan Brown Blue Green

Taper: Tapered Non-Tapered

Top Projection: 8" 10" 12" 14" 16" 18" 20" 22" 24"

Bottom Projection: 8" 10" 12" 14" 16" 18" 20" 22" 24"

Bottom Flaps: None 3" 6" Inside Inside & front All 3 sides D-Rings

Blockout: None Top projection _____" Bottom projection _____"

Wear Pleats: None WP4 WP8 WP16 Head and side pads Head pad corners

Material: 22 oz. vinyl 40 oz. vinyl 40 oz. CSM TS-55®

Color: Black Tan Brown Blue Green

Wear Face: None Head pad Side pad

Material: 22 oz. vinyl 40 oz. vinyl 40 oz. CSM TS-55®

Color: Black Tan Brown Blue Green

Reinforced Inside Face: Standard Side pad full height

Material: 22 oz. vinyl 40 oz. vinyl 40 oz. CSM TS-55®

Color: Black Tan Brown Blue Green

Options: Door numbers 24" Guide stripes Flame retardant fabric & foam Flame retardant fabric only Flame retardant foam only

Side Pad Mounting Brackets: None Flats & angles Angles 1 1/2" Offsets & angles

*Note: Consult factory for blackout application assistance.

*Conversions: To convert measurements to metric, see formulas below:

Inches x 25.4 = millimeters (Example: 4" x 25.4 = 101.6 mm)

Feet x .3048 = meters (Example: 12' x .3048 = 3.66 m)



Kelley
 1612 Hutton Drive, Suite 140
 Carrollton, TX 75006
 800.558.6960
 www.kelleydockolutions.com



Tel: (55) 4440 0360
 WhatsApp: (81) 8363 8981
 EMAIL: ventas@bering.com.mx

Front Engineered Solutions reserves the right to change specifications and designs without notice and without incurring obligations. Front Engineered Solutions products may be the subject of one or more U.S. and/or foreign, issued and/or pending, design and/or utility patents. Kelley as word and logo are registered trademarks belonging to ASSA ABLLOY Entrance Systems AB or other trademarks controlled by the same organization. All rights reserved.

©ASSA ABLLOY. All rights reserved. Part of ASSA ABLLOY. Printed in USA. KPS-SEDSH-1220