



# DSS Foam Dock Seal with Head Pad

## Product Specifications



### DESIGN HIGHLIGHTS

- Provides a positive seal between internal and external environments. Prevents the passage of dust, insects, exhaust fumes and other airborne particulate matter while the loading dock is in use
- Roll-formed, galvanized steel framing with 5 year warranty
- Endurance tested foam core is continuously bonded to frame surface with flexible, non-flammable adhesive
- A wide selection of durable coated fabrics provide maximum durability
- Highly resilient, open-celled polyurethane foam keeps original shape and compresses easily to extend the seal life
- Side pad bottoms are tapered to avoid pinching and wear
- All pads are vented for air and moisture release
- Full length yellow stripes guide drivers to the dock
- Heavy-duty, galvanized steel mounting brackets included

### APPLICATION DATA

Door width: \_\_\_\_\_ ft. \_\_\_\_\_ in.  
 Door height: \_\_\_\_\_ ft. \_\_\_\_\_ in.  
 Dock height: \_\_\_\_\_ ft. \_\_\_\_\_ in.

Bumper protection\*: \_\_\_\_\_ in.

(\*Includes bumper projection and any building wall/foundation offset or cantilever)

### TRUCKS AND TRAILERS SERVICED

Width: \_\_\_\_\_ Max. \_\_\_\_\_ Min.

Height: \_\_\_\_\_ Max. \_\_\_\_\_ Min.

Length: \_\_\_\_\_ Max. \_\_\_\_\_ Min.

Hydraulic tailgate:  Yes  No

Rear step section:  Yes  No

Tailgate/step section size: \_\_\_\_\_ in

Yard jockeys:  Yes  No

### PROJECT INFORMATION

JOB NAME \_\_\_\_\_

ADDRESS \_\_\_\_\_

GENERAL CONTRACTOR \_\_\_\_\_

DISTRIBUTOR \_\_\_\_\_

QUANTITY \_\_\_\_\_

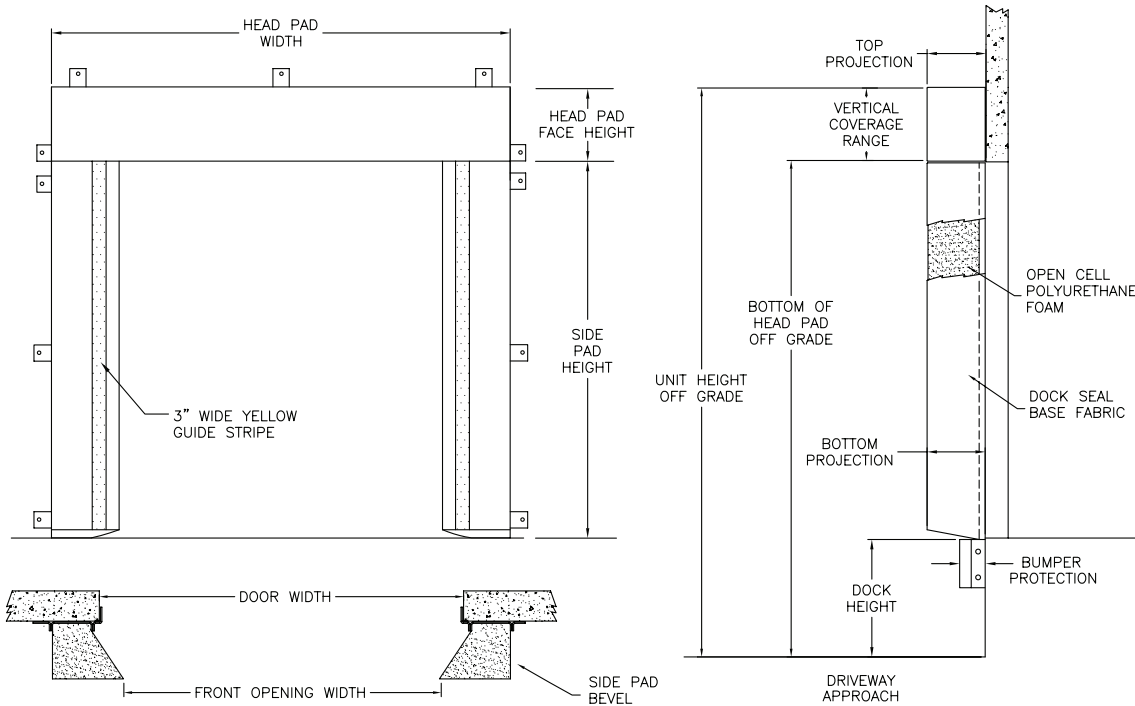
### CERTIFIED FOR CONSTRUCTION

BY \_\_\_\_\_

COMPANY \_\_\_\_\_

ADDRESS \_\_\_\_\_

DATE \_\_\_\_\_



Quantity \_\_\_\_\_ **Model:**  DSS

**Head Pad Width:** \_\_\_\_\_ (Total inches)

**Head Pad Back/Face:**  12/12  18/18  24/24  12/15  12/18  Wearmaster head pad

**Drop Curtain:**  None  12"  18"  24"  Velcro strips  Full width

**Side Pad Height:** \_\_\_\_\_ (Total inches)

**Side Pad Back/Face:**  12/12  6/10  8/12  10/12  10/15  8/15  12/15  10/18  6/14

**Base Material:**  22 oz. vinyl  40 oz. vinyl  16 oz. CSM  40 oz. CSM  TS-55®

**Color:**  Black  Tan  Brown  Blue  Green

**Taper:**  Tapered  Non-Tapered

**Top Projection:**  8"  10"  12"  14"  16"  18"  20"  22"  24"

**Bottom Projection:**  8"  10"  12"  14"  16"  18"  20"  22"  24"

**Bottom Flaps:**  None  3"  6"  Inside  Inside & front  All 3 sides

**Blockout:**  None  Top projection \_\_\_\_\_"  Bottom projection \_\_\_\_\_"

**Wear Pleats:**  None  WP4  WP8  WP16  Side pads  Head pad corners

**Material:**  22 oz. vinyl  40 oz. vinyl  40 oz. CSM  TS-55®

**Color:**  Black  Tan  Brown  Blue  Green

**Wear Face:**  None  Head pad  Side pad

**Material:**  22 oz. vinyl  40 oz. vinyl  40 oz. CSM  TS-55®

**Color:**  Black  Tan  Brown  Blue  Green

**Reinforced Inside Face:**  Standard  Side pad full height

**Material:**  22 oz. vinyl  40 oz. vinyl  40 oz. CSM  TS-55®

**Color:**  Black  Tan  Brown  Blue  Green

**Options:**  Door numbers  Flame retardant fabric & foam  Flame retardant fabric only  Flame retardant foam only

**Side Pad Mounting Brackets:**  None  Flats & angles  Angles  1 1/2" Offsets & Angles



**Kelley**  
 1612 Hutton Drive, Suite 140  
 Carrollton, TX 75006  
 800.558.6960  
 www.kelleydockolutions.com



Tel: (55) 4440 0360  
 WhatsApp: (81) 8363 8981  
 EMAIL: ventas@bering.com.mx

Front Engineered Solutions reserves the right to change specifications and designs without notice and without incurring obligations. Front Engineered Solutions products may be the subject of one or more U.S. and/or foreign, issued and/or pending, design and/or utility patents. Kelley as word and logo are registered trademarks belonging to ASSA ABLLOY Entrance Systems AB or other entities controlled by the same organization. All rights reserved.

©ASSA ABLLOY. All rights reserved. Part of ASSA ABLLOY. Printed in USA. KPS-SEDSS-1220