



# DSA Foam Dock Seal with Adjustable Head Pad

## Product Specifications



### DESIGN HIGHLIGHTS

- Adjustable head pad system operates utilizing an easy-release lever and has 48" working range to accommodate varying truck heights
- 18" high foam head pad is mounted on 10 ga. formed, painted steel which travels in slide tracks
- Adjustable spring-tension system provides for adjustment of counterbalance and horizontal tilt for smooth, jam-free operation
- Endurance-tested foam core is continuously bonded to frame surface with flexible, non-flammable adhesive.
- Roll-formed galvanized steel framing reduces pressure on building wall, 5 years warranty
- A wide selection of durable coated fabrics provide maximum durability
- Highly resilient, open-celled polyurethane foam keeps original shape and compresses easily to extend seal life
- Side pad bottoms are tapered to avoid pinching and wear
- All pads are vented for air and moisture release
- Full length yellow stripes guide drivers to the dock
- Heavy-duty, galvanized steel mounting brackets included

### APPLICATION DATA

Door width: \_\_\_\_\_ ft. \_\_\_\_\_ in.  
 Door height: \_\_\_\_\_ ft. \_\_\_\_\_ in.  
 Dock height: \_\_\_\_\_ ft. \_\_\_\_\_ in.

Bumper protection\*: \_\_\_\_\_ in.

(\*Includes bumper projection and any building wall/foundation offset or cantilever)

### TRUCKS AND TRAILERS SERVICED

Width: \_\_\_\_\_ Max. \_\_\_\_\_ Min.

Height: \_\_\_\_\_ Max. \_\_\_\_\_ Min.

Length: \_\_\_\_\_ Max. \_\_\_\_\_ Min.

Hydraulic tailgate:  Yes  No

Rear step section:  Yes  No

Tailgate/step section size: \_\_\_\_\_ in

Yard jockeys:  Yes  No

### PROJECT INFORMATION

JOB NAME \_\_\_\_\_

ADDRESS \_\_\_\_\_

GENERAL CONTRACTOR \_\_\_\_\_

DISTRIBUTOR \_\_\_\_\_

QUANTITY \_\_\_\_\_

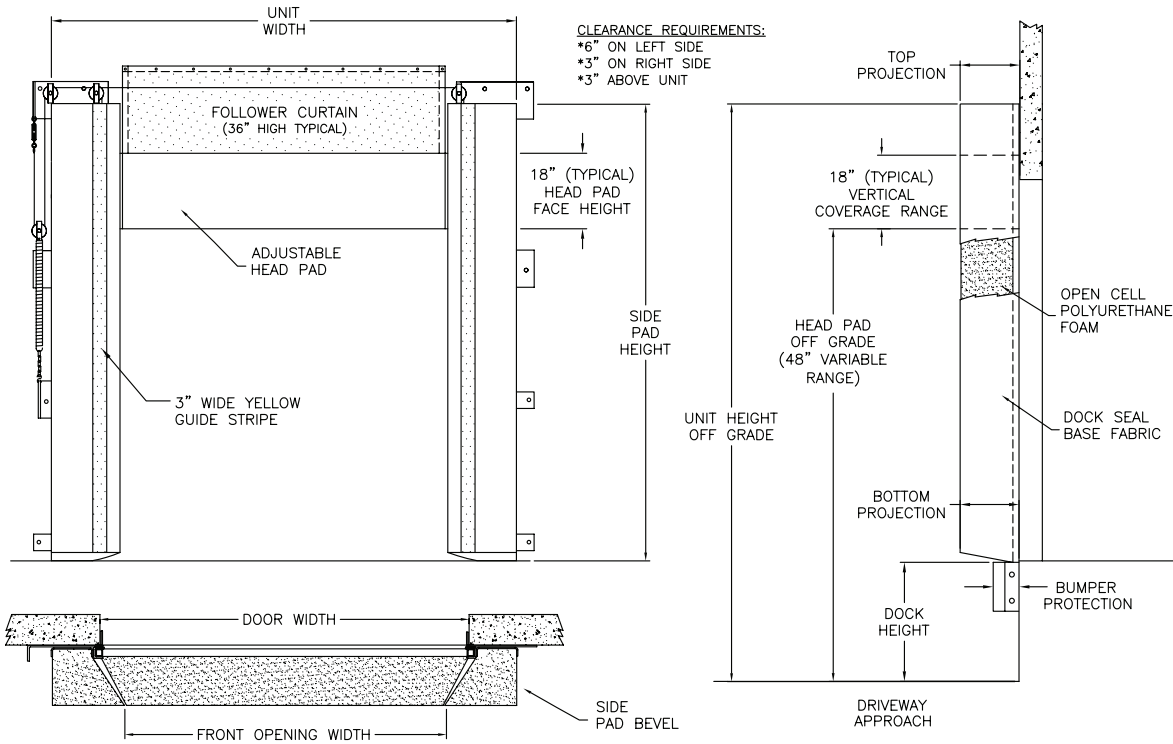
### CERTIFIED FOR CONSTRUCTION

BY \_\_\_\_\_

COMPANY \_\_\_\_\_

ADDRESS \_\_\_\_\_

DATE \_\_\_\_\_



Quantity \_\_\_\_\_ Model:  DSA

Distance to Outside of Side Pads: \_\_\_\_\_ (Total inches)

Side Pad Height: \_\_\_\_\_ (Total inches)

Side Pad Bevel:  12/12  6/10  8/12  10/12  10/15  8/15  12/15  10/18  6/14

Head Pad Bevel:  18/18

Base Material:  22 oz. vinyl  40 oz. vinyl  16 oz. CSM  40 oz. CSM  TS-55®

Color:  Black  Tan  Brown  Blue  Green

Taper:  Tapered  Non-Tapered

Top Projection:  8"  10"  12"  14"  16"  18"  20"  22"  \_\_\_\_\_

Bottom Projection:  8"  10"  12"  14"  16"  18"  20"  22"  \_\_\_\_\_

Bottom Flaps:  None  3"  6"  Inside  Inside & front  All 3 sides

Wear Surface:  None  Wear face  Reinforced inside face  Side pad 4"  Side pad  Head pad

Material:  22 oz. vinyl  40 oz. vinyl  40 oz. CSM  TS-55®

Color:  Black  Tan  Brown  Blue  Green

Wear Pleats:  None  WP4  WP8  WP16  Side pads

Material:  22 oz. vinyl  40 oz. vinyl  40 oz. CSM  TS-55®

Color:  Black  Tan  Brown  Blue  Green

Options:  Door numbers  Flame retardant fabric & foam  Flame retardant fabric only  Flame retardant foam only

Side Pad Mounting Brackets:  None  Flats & angles  Angles  1 1/2" Offset flats & angles

\*Conversions: To convert measurements to metric, see formulas below:  
 Inches x 25.4 = millimeters (Example: 4" x 25.4 = 101.6 mm)  
 Feet x .3048 = meters (Example: 12' x .3048 = 3.66 m)



Tel: (55) 4440 0360  
 WhatsApp: (81) 8363 8981  
 EMAIL: ventas@bering.com.mx