



# DSH Foam Dock Seal with Head Curtain

## Product Specifications



### DESIGN HIGHLIGHTS

- Top of hood is tapered forward and securely fastened to the building wall
- Tapered top is supported with thick wall aluminum pipe
- Fiberglass stays add stiffness to hood top to prevent sagging
- Hood curtain splits offer load relief and higher clearance
- Roll-formed galvanized steel framing reduces pressure on building wall, warranted for 5 years
- Endurance tested foam core is continuously bonded to frame surface with flexible, non-flammable adhesive
- A wide selection of durable coated fabrics provide maximum durability
- Highly resilient, open-celled polyurethane foam keeps original shape and compresses easily to extend seal life
- Side pad bottoms are tapered to avoid pinching and wear
- All pads are vented for air and moisture release
- Full length yellow stripes guide drivers to the dock
- Heavy-duty, galvanized steel mounting brackets included

### APPLICATION DATA

Door width: \_\_\_\_\_ ft. \_\_\_\_\_ in.  
 Door height: \_\_\_\_\_ ft. \_\_\_\_\_ in.  
 Dock height: \_\_\_\_\_ ft. \_\_\_\_\_ in.

Bumper protection\*: \_\_\_\_\_ in.

(\*Includes bumper projection and any building wall/foundation offset or cantilever)

### TRUCKS AND TRAILERS SERVICED

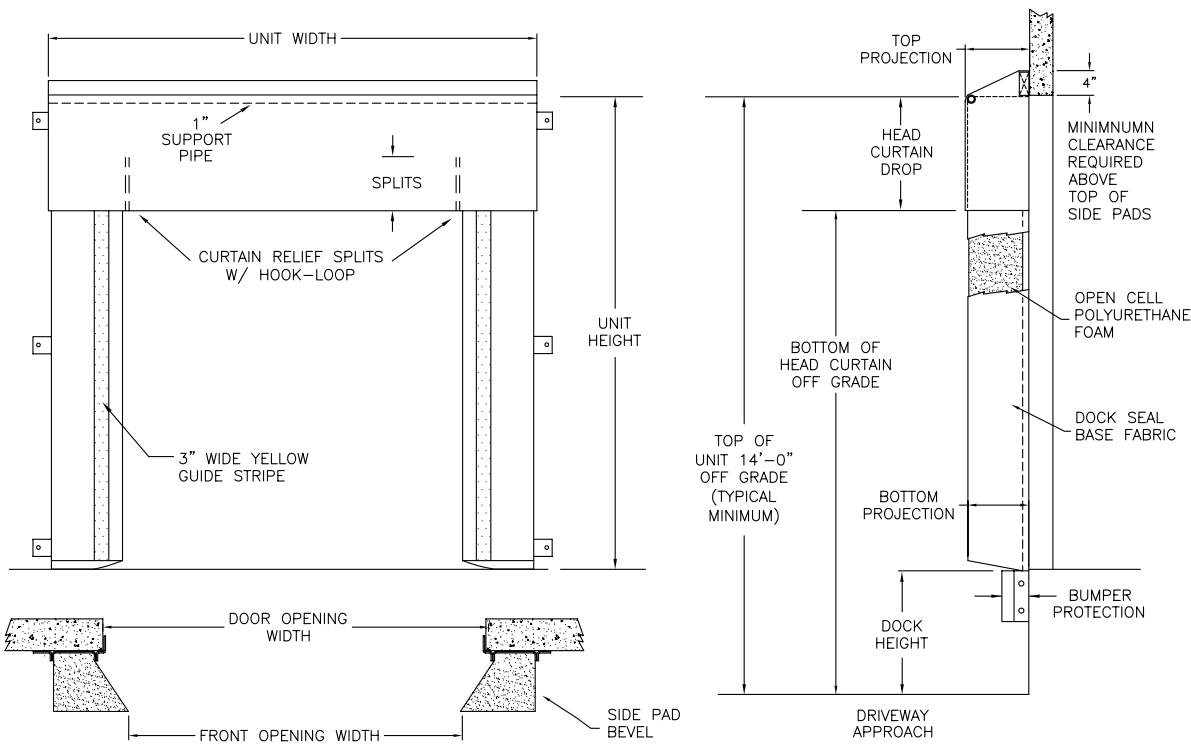
Width: \_\_\_\_\_ Max. \_\_\_\_\_ Min.  
 Height: \_\_\_\_\_ Max. \_\_\_\_\_ Min.  
 Length: \_\_\_\_\_ Max. \_\_\_\_\_ Min.  
 Hydraulic tailgate:  Yes  No      Rear step section:  Yes  No  
 Tailgate/step section size: \_\_\_\_\_ in      Yard jockeys:  Yes  No

### PROJECT INFORMATION

JOB NAME \_\_\_\_\_  
 ADDRESS \_\_\_\_\_  
 GENERAL CONTRACTOR \_\_\_\_\_  
 DISTRIBUTOR \_\_\_\_\_  
 QUANTITY \_\_\_\_\_

### CERTIFIED FOR CONSTRUCTION

BY \_\_\_\_\_  
 COMPANY \_\_\_\_\_  
 ADDRESS \_\_\_\_\_  
 DATE \_\_\_\_\_



Quantity \_\_\_\_\_ Model:  DSH

Head Curtain Width: (Distance to outside of side pads) \_\_\_\_\_ (Total inches)

Head Curtain Drop:  18"  24"  30"  36"  42"  48"  \_\_\_\_\_

Head Curtain Splits:  6"  12"  18"  24"  30"  36"  No split

Head Curtain Options:  None  Pull-rope assy  2" foam front  Sectional foam front

Side Pad Height: \_\_\_\_\_ (Total inches)

Side Pad Back/Face:  6/10  8/12  10/12  12/12  12/15  8/15  6/14  10/18  8/23

Base Material:  22 oz. vinyl  40 oz. vinyl  16 oz. CSM  40 oz. CSM  TS-55®

Color:  Black  Tan  Brown  Blue  Green

Taper:  Tapered  Non-Tapered

Top Projection:  8"  10"  12"  14"  16"  18"  20"  22"  24"

Bottom Projection:  8"  10"  12"  14"  16"  18"  20"  22"  24"

Bottom Flaps:  None  3"  6"  Inside  Inside & front  All 3 sides  D-Rings

Blockout:  None  Top projection \_\_\_\_\_"  Bottom projection \_\_\_\_\_"

Wear Pleats:  None  WP4  WP8  WP16  Head and side pads  Head pad corners

Material:  22 oz. vinyl  40 oz. vinyl  40 oz. CSM  TS-55®

Color:  Black  Tan  Brown  Blue  Green

Wear Face:  None  Head pad  Side pad

Material:  22 oz. vinyl  40 oz. vinyl  40 oz. CSM  TS-55®

Color:  Black  Tan  Brown  Blue  Green

Reinforced Inside Face:  Standard  Side pad full height

Material:  22 oz. vinyl  40 oz. vinyl  40 oz. CSM  TS-55®

Color:  Black  Tan  Brown  Blue  Green

Options:  Door numbers  24" Guide stripes  Flame retardant fabric & foam  Flame retardant fabric only  Flame retardant foam only

Side Pad Mounting Brackets:  None  Flats & angles  Angles  1 1/2" Offsets & angles

\*Note: Consult factory for blockout application assistance.

\*Conversions: To convert measurements to metric, see formulas below:

Inches x 25.4 = millimeters (Example: 4" x 25.4 = 101.6 mm)

Feet x .3048 = meters (Example: 12' x .3048 = 3.66 m)



Tel: (55) 4440 0360  
 WhatsApp: (81) 8363 8981  
 EMAIL: ventas@bering.com.mx