



DSHL L-PAD Hood Curtain Dock Seal

Product Specifications



DESIGN HIGHLIGHTS

- Provides positive seal between internal and external environments
- Endurance-tested foam core is continuously bonded to frame surface with flexible, non-flammable adhesive
- Top of hood is tapered forward and supported with thick wall aluminum pipe
- Hood curtain splits offer load relief and higher clearance
- Highly resilient, open-celled polyurethane foam compresses easily to extend seal life
- Roll-formed galvanized steel framing reduces pressure on building wall
- L-shaped sides compress around side of trailer to create a seal providing full width trailer access
- All pads are vented for air and moisture release
- Full length yellow stripes guide
- Heavy-duty, galvanized steel mounting brackets included

APPLICATION DATA

Door width: _____ ft. _____ in.
 Door height: _____ ft. _____ in.
 Dock height: _____ ft. _____ in.

Bumper protection*: _____ in.
 (*Includes bumper projection and any building wall/foundation offset or cantilever)

TRUCKS AND TRAILERS SERVICED

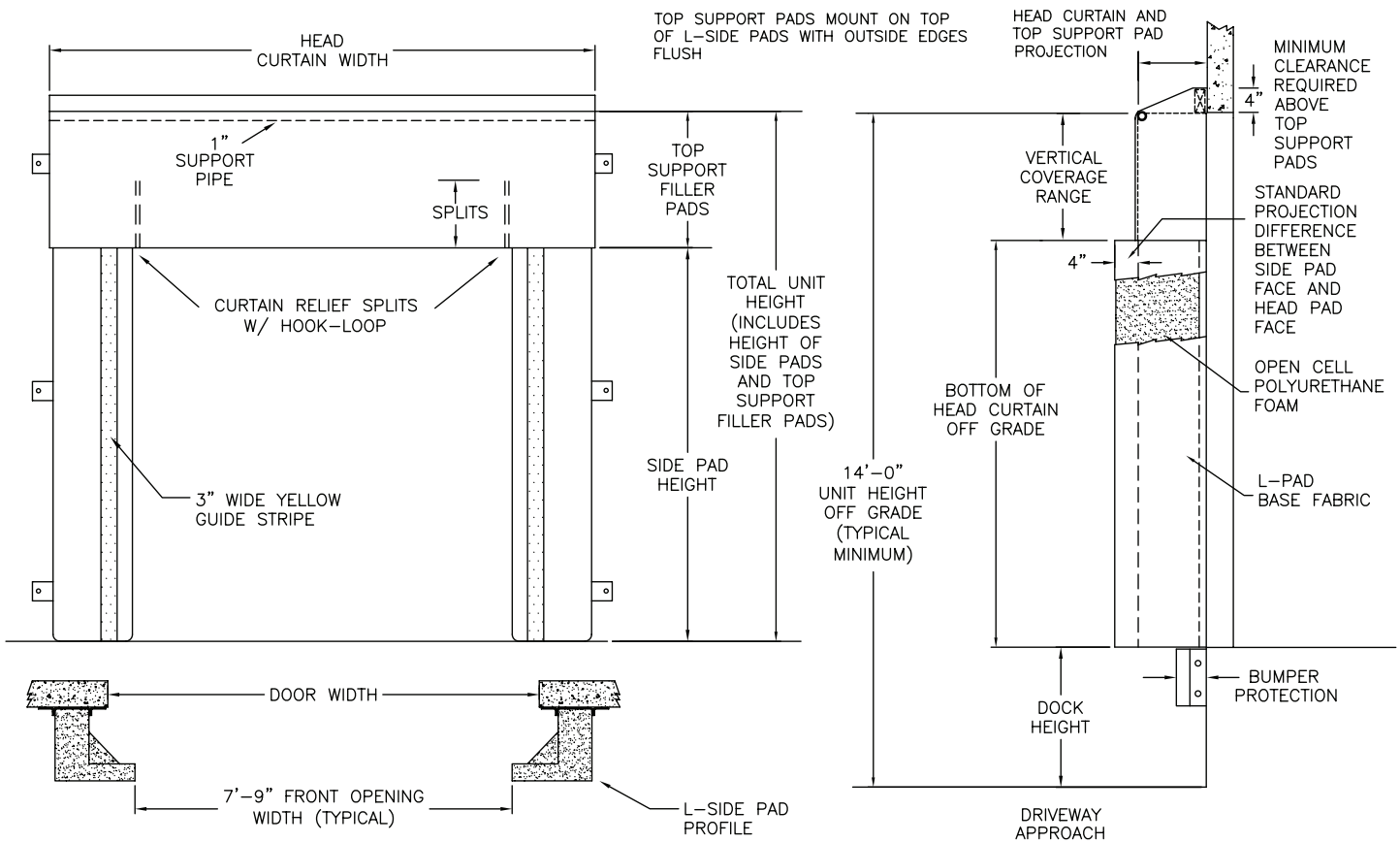
Width: _____ Max. _____ Min.
 Height: _____ Max. _____ Min.
 Length: _____ Max. _____ Min.
 Hydraulic tailgate: Yes No Rear step section: Yes No
 Tailgate/step section size: _____ in Yard jockeys: Yes No

PROJECT INFORMATION

JOB NAME _____
 ADDRESS _____
 GENERAL CONTRACTOR _____
 DISTRIBUTOR _____
 QUANTITY _____

CERTIFIED FOR CONSTRUCTION

BY _____
 COMPANY _____
 ADDRESS _____
 DATE _____



Quantity _____ Model: DSHL

Framing: Roll formed galvanized steel

Head Curtain Width: 129" for 9'6" door widths or smaller 135" for 9'7" to 10'0" door widths

Head Curtain Drop: 18" 24" 30" 36" 42" 48" _____"

Head Curtain Splits: 18" 24" 30" 36" No split

Side Pad Height: _____ (Total unit height)

Side Pad Face: 18" for 9'6" door widths or smaller 21" for 9'7" to 10'0" door widths

Base Material: 22 oz. vinyl 40 oz. vinyl 16 oz. CSM 40 oz. CSM TS-55®

Color: Black Tan Brown Blue Green

Taper: Tapered Non-Tapered

Top Projection: 16" 18" 20" 22" 24" _____"

Bottom Projection: 16" 18" 20" 22" 24" _____"

Blockout: None Top projection _____" Bottom projection _____"

Wear Face: None Hood Side pad Tip of "L" (TS-55®)

Material: 22 oz. vinyl 40 oz. vinyl 40 oz. CSM TS-55®

Color: Black Tan Brown Blue Green

Wear Pleats: None WP4 WP8 WP16 Side pads Head pad corners

Material: 22 oz. vinyl 40 oz. vinyl 40 oz. CSM TS-55®

Color: Black Tan Brown Blue Green

Options: Door numbers Flame retardant fabric & foam Flame retardant fabric only

Side Pad Mounting Brackets: None Flats & angles Angles 1 1/2" Offsets & angles

*Conversions: To convert measurements to metric, see formulas below:

Inches x 25.4 = millimeters (Example: 4" x 25.4 = 101.6 mm)

Feet x .3048 = meters (Example: 12' x .3048 = 3.66 m)



Tel: (55) 4440 0360
 WhatsApp: (81) 8363 8981
 EMAIL: ventas@bering.com.mx