



# DSSL L-PAD Standard Dock Seal

## Product Specifications



### DESIGN HIGHLIGHTS

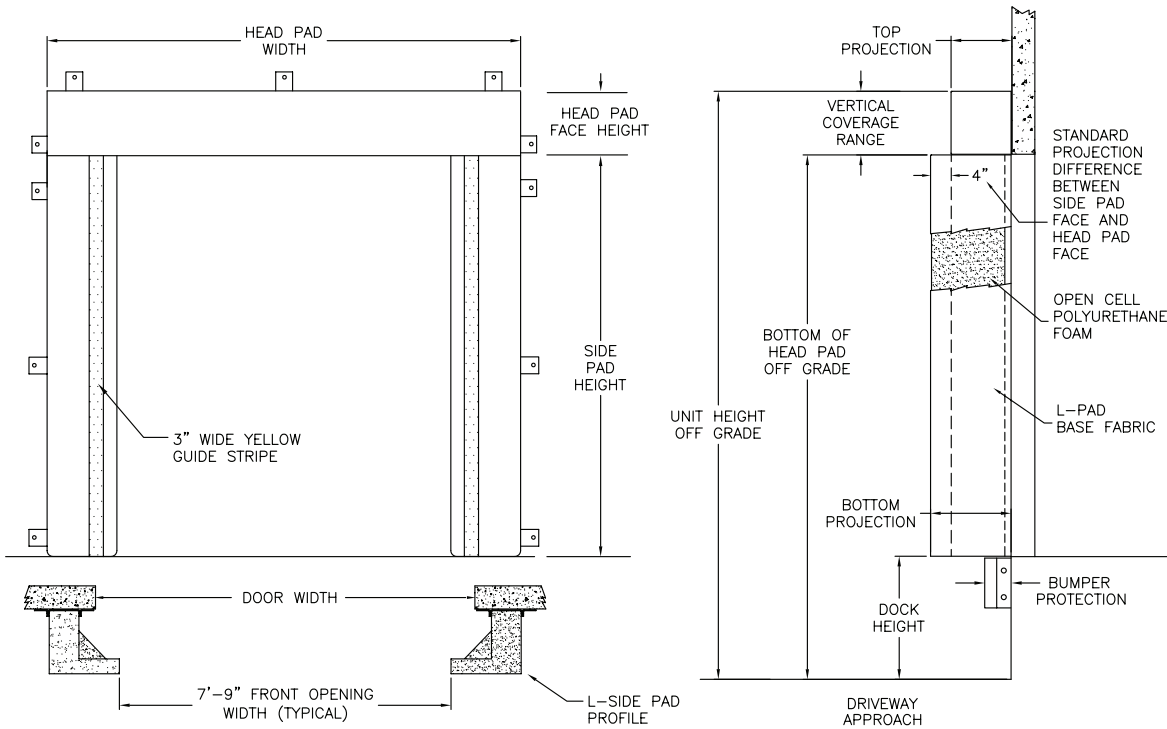
- L-shaped sides compress around side of trailer to create a seal providing full width trailer access
- Provides positive seal between internal and external environments
- Endurance-tested foam core is continuously bonded to frame surface with flexible, non-flammable adhesive
- Wide selection of coated fabrics provide maximum durability
- Highly resilient, open-celled polyurethane foam compresses easily to extend seal life
- Roll-formed galvanized steel framing reduces pressure on building wall
- All pads are vented for air and moisture release
- Full length yellow stripes guide
- Heavy-duty, galvanized steel mounting brackets included

### PROJECT INFORMATION

JOB NAME \_\_\_\_\_  
ADDRESS \_\_\_\_\_  
GENERAL CONTRACTOR \_\_\_\_\_  
DISTRIBUTOR \_\_\_\_\_  
QUANTITY \_\_\_\_\_

### CERTIFIED FOR CONSTRUCTION

BY \_\_\_\_\_  
COMPANY \_\_\_\_\_  
ADDRESS \_\_\_\_\_  
DATE \_\_\_\_\_



Quantity \_\_\_\_\_

**Framing:** Roll-formed galvanized steel

**Head Pad Width:**  129" for 9'3" door widths or smaller  135" for 9'4" to 10'0" door widths

**Head Pad Bevel:**  12/12  18/18  24/24  12/15  12/18  Wearmaster head pad

**Drop Curtain:**  None  12"  Hook-Loop

**Side Pad Height:** \_\_\_\_\_ (Total unit height)

**Side Pad Face**  18" for 9'3" door widths or smaller  21" for 9'4" to 10'0" door widths

**Base Material**  22 oz. vinyl  40 oz. vinyl  16 oz. CSM  40 oz. CSM  TS-55®

**Color:**  Black  Tan  Brown  Blue  Green

**Taper:**  Tapered  Non-Tapered

**Top Projection:**  16"  18"  20"  22"  24"  \_\_\_\_\_"

**Bottom Projection:**  16"  18"  20"  22"  24"  \_\_\_\_\_"

**Blockout:**  None  Top projection \_\_\_\_\_"  Bottom projection \_\_\_\_\_"

**Wear Surface:**  None  Wear face  Side pad  Head pad

**Material:**  22 oz. vinyl  40 oz. vinyl  40 oz. CSM  TS-55®

**Color:**  Black  Tan  Brown  Blue  Green

**Wear Pleats:**  None  WP4  WP8  WP16  Side pads  Head pad corners

**Material:**  22 oz. vinyl  40 oz. vinyl  40 oz. CSM  TS-55®

**Color:**  Black  Tan  Brown  Blue  Green

**Options:**  Door numbers  Flame retardant fabric & foam  Flame retardant fabric only

**Side Pad Mounting Brackets:**  None  Flats & angles  Angles  1 1/2" Offsets & angles

\*Conversions: To convert measurements to metric, see formulas below:

Inches x 25.4 = millimeters (Example: 4" x 25.4 = 101.6 mm)

Feet x .3048 = meters (Example: 12' x .3048 = 3.66 m)



Tel: (55) 4440 0360

WhatsApp: (81) 8363 8981

EMAIL: ventas@bering.com.mx