



# V-Seal Head Pad Dock Seal

## Product Specifications



### DESIGN HIGHLIGHTS

- V-shaped side pads provide better trailer access and seal hinge gaps on trailer swing-out doors
- Fixed-foam head pad seals gap between top of trailer and building wall
- 22 oz. vinyl-base fabric with protective pleated layer of TS-55® super fabric in critical wear areas provides exceptional wear resistance
- Full-length yellow stripes guide drivers to the dock
- Roll-formed galvanized steel framing reduces pressure on building wall
- 3-inch inside bottom flaps provide extra protection against outside elements

### APPLICATION DATA

Door width: \_\_\_\_\_ ft. \_\_\_\_\_ in.

Door height: \_\_\_\_\_ ft. \_\_\_\_\_ in.

Dock height: \_\_\_\_\_ ft. \_\_\_\_\_ in.

Bumper protection\*: \_\_\_\_\_ in.

(\*Includes bumper projection and any building wall/foundation offset or cantilever)

### TRUCKS AND TRAILERS SERVICED

Width: \_\_\_\_\_ Max. \_\_\_\_\_ Min.

Height: \_\_\_\_\_ Max. \_\_\_\_\_ Min.

Length: \_\_\_\_\_ Max. \_\_\_\_\_ Min.

Hydraulic tailgate:  Yes  No

Tailgate/step section size: \_\_\_\_\_ in

Rear step section:  Yes  No

Yard jockeys:  Yes  No

### PROJECT INFORMATION

JOB NAME \_\_\_\_\_

ADDRESS \_\_\_\_\_

GENERAL CONTRACTOR \_\_\_\_\_

DISTRIBUTOR \_\_\_\_\_

QUANTITY \_\_\_\_\_

### CERTIFIED FOR CONSTRUCTION

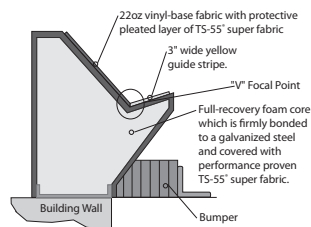
BY \_\_\_\_\_

COMPANY \_\_\_\_\_

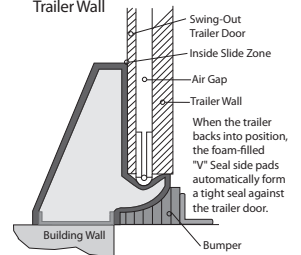
ADDRESS \_\_\_\_\_

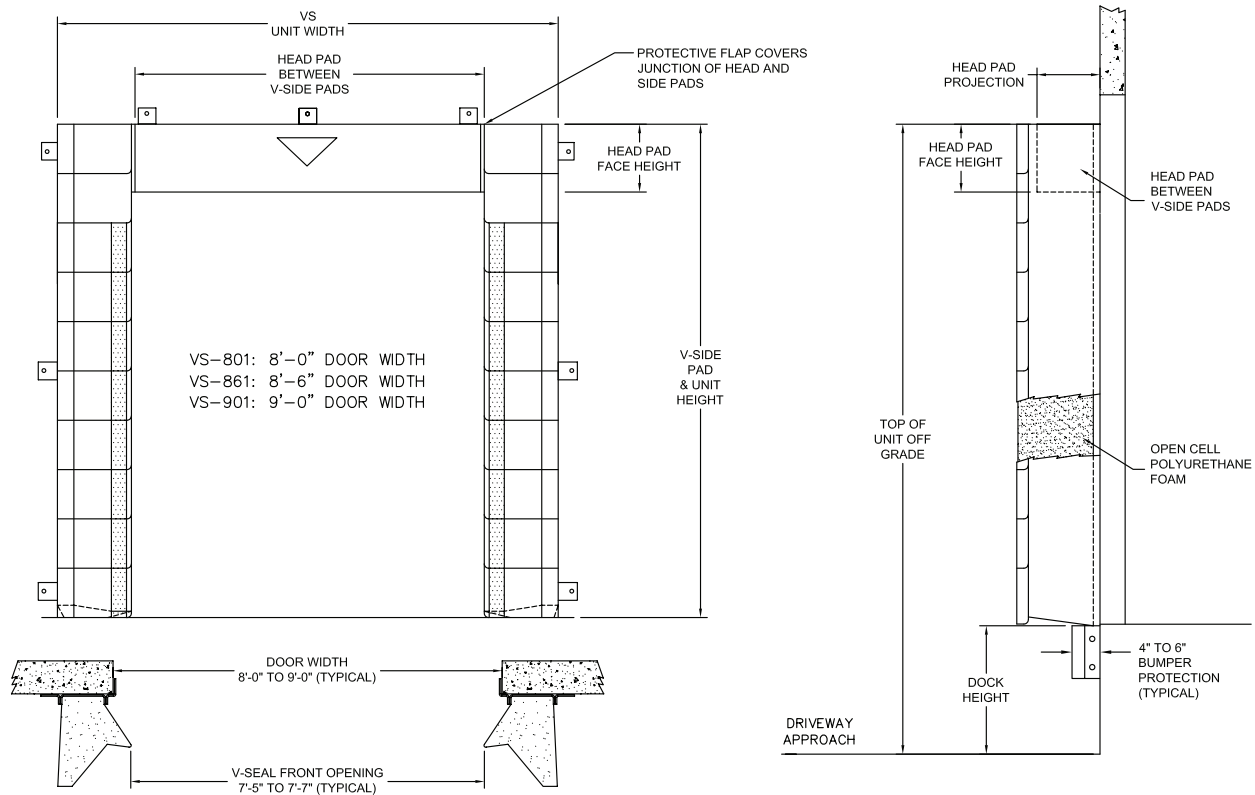
DATE \_\_\_\_\_

Dock Empty - Side Pad in Ready to Use Position



Truck Spotted - Side Pads Seal the Gap Between Swing Door and Trailer Wall





Quantity \_\_\_\_\_ Model:  VS-801 (for 8'-0" wide doors)  VS-861 (for 8'-6" wide doors)  VS-902 (for 9'-0" wide doors)

Unit Width:  114" (VS-801)  120" (VS-861)  123" (VS-902)

Head Pad Back/Face:  12/12  18/18  12/18  WearMaster® head pad

Drop Curtain:  None  12"  18"  24"  Hook-Loop

Unit Height: \_\_\_\_\_" = (Door height + Head pad back height - Typical)

Base Material: 22 oz. vinyl base fabric with TS-55® wear pleats in critical wear areas

Color:  Black  Tan  Brown  Blue  Green

Wood Blockout:  None  Tapered  Non-Tapered

Blockout Top Projection:  0"  2"  4"  6"  8"  10"  12"  \_\_\_\_\_"

Blockout Bottom Projection:  0"  2"  4"  6"  8"  10"  12"  \_\_\_\_\_"

Foam Blockout:  None  Tapered  Non-Tapered

Blockout Top Projection:  0"  2"  4"      Blockout Bottom Projection:  0"  2"  4"

Head Pad Wear Face:  None  Yes

22 oz. vinyl  40 oz. vinyl  40 oz. CSM  TS-55®

Black  Tan  Brown  Blue  Green

Bottom Flaps (3" Inside Flaps are Standard):  6" Inside  \_\_\_\_\_" (Up to 12")

Options:  Door numbers  Flame retardant fabric & foam  Flame retardant fabric only  Flame retardant foam only

Side Pad Mounting Brackets:  Flats & angles (VS-902)  Angles  1 1/2" Offsets & angles (VS-801 & VS-861)

\*Note: Consult factory for blockout application assistance.

\*Conversions: To convert measurements to metric, see formulas below:

Inches x 25.4 = millimeters (Example: 4" x 25.4 = 101.6 mm)

Feet x .3048 = meters (Example: 12' x .3048 = 3.66 m)



Tel: (55) 4440 0360  
 WhatsApp: (81) 8363 8981  
 EMAIL: ventas@bering.com.mx