



V-Seal Head Curtain Dock Seal

Product Specifications



DESIGN HIGHLIGHTS

- V-shaped side pads provide better trailer access and seal hinge gaps on trailer swing-out doors
- Fabric style hood with fixed or adjustable head curtain seals gap between taller doors and building walls
- 22 oz. vinyl base fabric with protective pleated layer of TS-55® super fabric in critical wear areas provides exceptional wear resistance
- Full-length yellow stripes guide drivers to the dock
- Roll-formed galvanized steel framing reduces pressure on building wall
- 3-inch inside bottom flaps provide extra protection against outside elements

APPLICATION DATA

Door width: _____ ft. _____ in.
 Door height: _____ ft. _____ in.
 Dock height: _____ ft. _____ in.

Bumper Protection*: _____ in.

(*Includes bumper projection and any building wall/foundation offset or cantilever)

TRUCKS AND TRAILERS SERVICED

Width: _____ Max. _____ Min.
 Height: _____ Max. _____ Min.
 Length: _____ Max. _____ Min.

Hydraulic tailgate: Yes No

Tailgate/step section size: _____ in

Rear step section: Yes No

Yard jockeys: Yes No

PROJECT INFORMATION

JOB NAME _____

ADDRESS _____

GENERAL CONTRACTOR _____

DISTRIBUTOR _____

QUANTITY _____

CERTIFIED FOR CONSTRUCTION

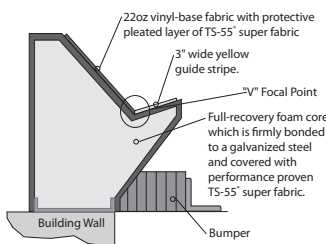
BY _____

COMPANY _____

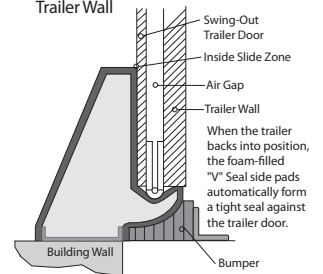
ADDRESS _____

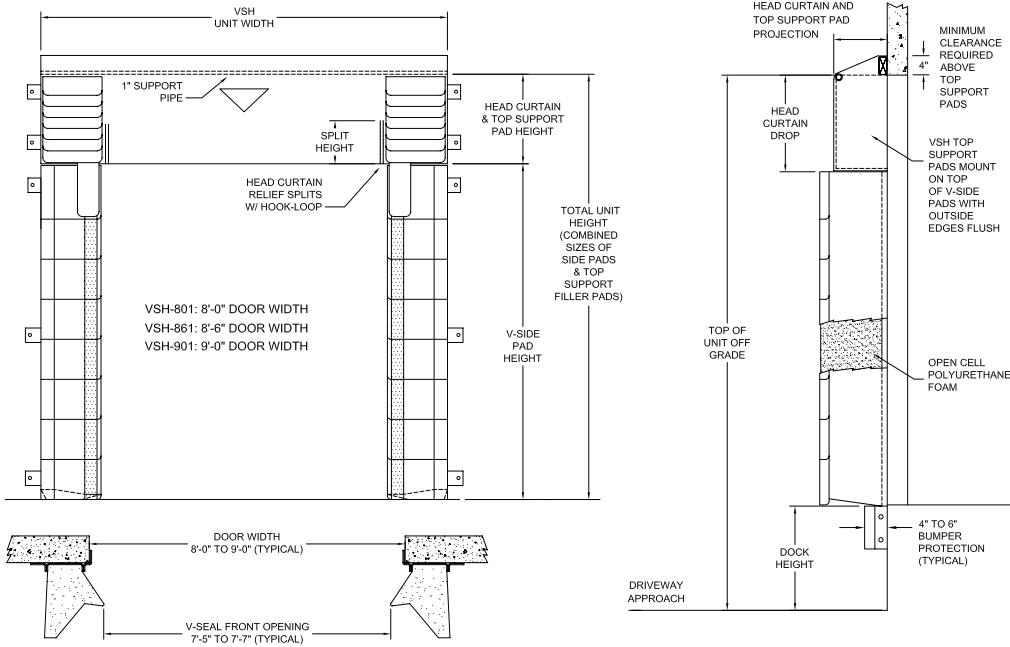
DATE _____

Dock Empty - Side Pad in Ready to Use Position



Truck Spotted - Side Pads Seal the Gap Between Swing Door and Trailer Wall





Quantity _____ **Model:** VSH-801 (for 8'-0" wide doors) VSH-861 (for 8'-6" wide doors) VSH-902 (for 9'-0" wide doors)

Unit Width: 114" (VSH-801) 120" (VSH-861) 123" (VSH-902)

Curtain Drop: 18" 24" 30" _____"

Drop Curtain Splits: None 6" 12" 18" _____"

Drop Curtain Options: None Pull rope assy D-Rings 2" Foam front Sectional foam front

Total Unit Height: _____"

Material: 22 oz. vinyl base fabric with TS-55 wear pleats in critical wear area

Color: Black Tan Brown Blue Green

Wood Blockout: None Tapered Non-Tapered

Blockout Top Projection: 0" 2" 4" 6" 8" 10" 12" _____"

Blockout Bottom Projection: 0" 2" 4" 6" 8" 10" 12" _____"

Foam Blockout: None Tapered Non-Tapered

Blockout Top Projection: 0" 2" 4"

Blockout Bottom Projection: 0" 2" 4"

Bottom Flaps (3" Inside Flaps are Standard): 6" Inside _____" (Up to 12")

Options: Door numbers Flame retardant fabric & foam Flame retardant fabric only Flame retardant foam only

Mounting Brackets: Flats & angles (VSH-902) 1 1/2" Offsets & angles (VSH-801 & VSH-861) Angles

*Note: Consult factory for blockout application assistance.

*Conversions: To convert measurements to metric, see formulas below:

Inches x 25.4 = millimeters (Example: 4" x 25.4 = 101.6 mm)

Feet x .3048 = meters (Example: 12' x .3048 = 3.66 m)



Tel: (55) 4440 0360
 WhatsApp: (81) 8363 8981
 EMAIL: ventas@bering.com.mx