



# TS Series Rigid Frame Dock Shelter

## Product Specifications



### DESIGN HIGHLIGHTS

- Heavy-duty frame available in roll formed galvanized steel (includes five year warranty) or 1 1/4" square steel
- Frames covered with translucent white fiberglass to transmit natural light into the loading area
- Raked header permits weather drainage (flat header is used when shelter is protected by a hood or canopy)
- Foam weather strip provides a seal on the top, front edge of the shelter frame, under aluminum trim angle
- Fiberglass stays add stiffness to shelter face curtains
- Wind straps on head curtain keep the head curtain from being blown out of position when the shelter is not in use
- Four overlapping wear pleats per side absorb the impact from sharp trailer corners
- Closed cell neoprene forms a wiper seal on the sides and top of trailers
- Wear panels with guide stripes provide drivers with a visual reference to the dock
- Tapered draft pads (8" to 2") located behind the side curtains help prevent air flow from lower corners of the shelter. Permanent "NO STEP" labels are included for safety
- Heavy-duty steel supports provide support and protect each side frame

### APPLICATION DATA

Door width: \_\_\_\_\_ ft. \_\_\_\_\_ in.  
 Door height: \_\_\_\_\_ ft. \_\_\_\_\_ in.  
 Dock height: \_\_\_\_\_ ft. \_\_\_\_\_ in.

Bumper protection\*: \_\_\_\_\_ in.

(\*Includes bumper projection and any building wall/foundation offset or cantilever)

### TRUCKS AND TRAILERS SERVICED

Width: \_\_\_\_\_ Max. \_\_\_\_\_ Min.

Height: \_\_\_\_\_ Max. \_\_\_\_\_ Min.

Length: \_\_\_\_\_ Max. \_\_\_\_\_ Min.

Hydraulic tailgate:  Yes  No

Rear step section:  Yes  No

Tailgate/step section size: \_\_\_\_\_ in

Yard jockeys:  Yes  No

### PROJECT INFORMATION

JOB NAME \_\_\_\_\_

ADDRESS \_\_\_\_\_

GENERAL CONTRACTOR \_\_\_\_\_

DISTRIBUTOR \_\_\_\_\_

QUANTITY \_\_\_\_\_

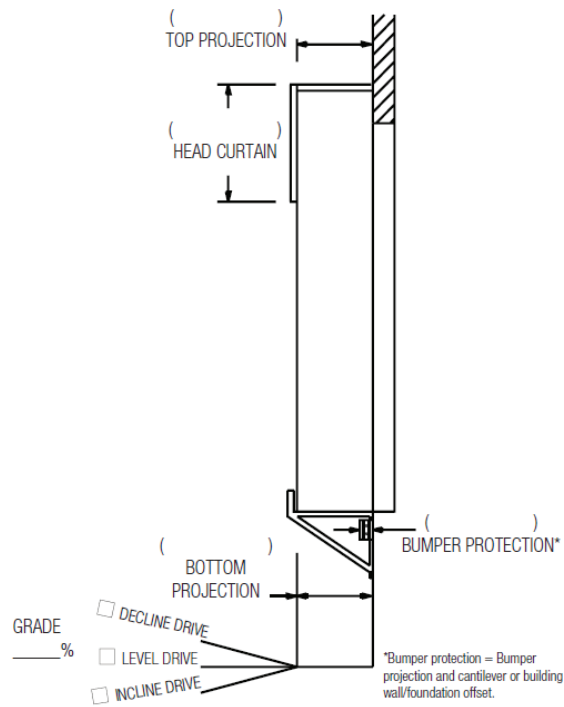
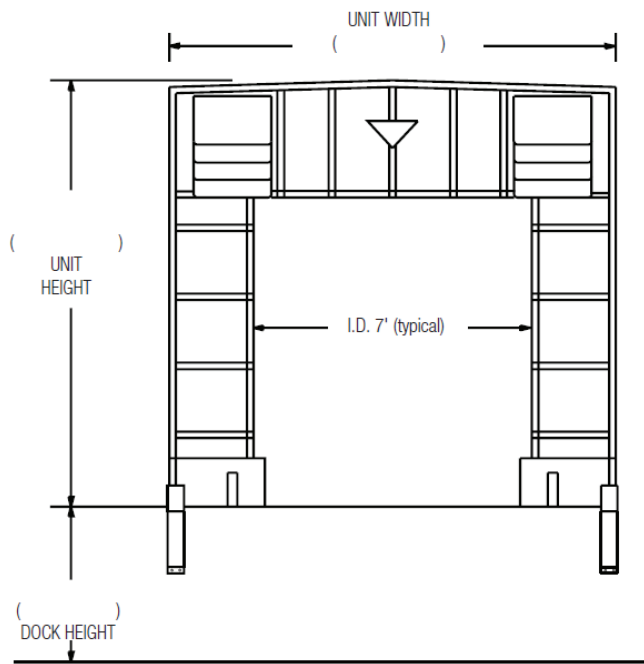
### CERTIFIED FOR CONSTRUCTION

BY \_\_\_\_\_

COMPANY \_\_\_\_\_

ADDRESS \_\_\_\_\_

DATE \_\_\_\_\_



Quantity \_\_\_\_\_ Model:  TS-1000

Drive/Approach:  Level  Incline  Decline \_\_\_\_\_ % grade

Frame:  Roll-formed galvanized steel  1 1/4" Steel tube

Building Wall Construction:  Metal  Other

Total Unit Width: \_\_\_\_\_" Total Unit Height: \_\_\_\_\_"

Material:  22 oz. vinyl  40 oz. vinyl  40 oz. CSM  TS-55®

Color:  Black  Tan  Brown  Blue  Green

Head Curtain Drop:  30"  36"  42"  48"  54"  \_\_\_\_\_"

Head Member Style:  Raked  Flat  Single steel tube

Taper:  Tapered  Non-Tapered

Top Projection:  24"  27"  30"  33"  36"  39"  42"  45"  48"  51"  54"

Bottom Projection:  24"  30"  36"  42"  48" (For projections over 48" consult factory)

Steel Supports:  30"  36"  42"  48"  54"

Steel Support Extensions:  None  \_\_\_\_\_"  6"  12" (Specify front channel or back extension)

Draft Pads:  None  24"  30"  36"  42"  48"  54"

Options:  None  Door numbers  Full length guide stripes  Pull rope assembly

\*Conversions: To convert measurements to metric, see formulas below:  
 Inches x 25.4 = millimeters [Example: 4" x 25.4 = 101.6 mm]  
 Feet x .3048 = meters [Example: 12' x .3048 = 3.66 m]



Tel: (55) 4440 0360  
 WhatsApp: (81) 8363 8981  
 EMAIL: ventas@bering.com.mx